

Recovery of wall-shear stress to equilibrium flow conditions after a rough-to-smooth step change in turbulent boundary layers

Mogeng Li^{1,†}, Charitha M. de Silva¹, Amirreza Rouhi¹, Rio Baidya¹, Daniel Chung¹, Ivan Marusic¹ and Nicholas Hutchins¹

¹Department of Mechanical Engineering, University of Melbourne, Victoria 3010, Australia

(Received 16 January 2019; revised 26 March 2019; accepted 24 April 2019;
first published online 10 June 2019)

This paper examines the recovery of the wall-shear stress of a turbulent boundary layer that has undergone a sudden transition from a rough to a smooth surface. Early work of Antonia & Luxton (*J. Fluid Mech.*, vol. 53, 1972, pp. 737–757) questioned the reliability of standard smooth-wall methods for measuring wall-shear stress in such conditions, and subsequent studies show significant disagreement depending on the approach used to determine the wall-shear stress downstream. Here we address this by utilising a collection of experimental databases at $Re_\tau \approx 4100$ that have access to both ‘direct’ and ‘indirect’ measures of the wall-shear stress to understand the recovery to equilibrium conditions of the new surface. Our results reveal that the viscous region ($z^+ \lesssim 4$) recovers almost immediately to an equilibrium state with the new wall conditions; however, the buffer region and beyond takes several boundary layer thicknesses before recovering to equilibrium conditions, which is longer than previously thought. A unique direct numerical simulation database of a wall-bounded flow with a rough-to-smooth wall transition is employed to confirm these findings. In doing so, we present evidence that any estimate of the wall-shear stress from the mean velocity profile in the buffer region or further away from the wall tends to underestimate its magnitude in the near vicinity of the rough-to-smooth transition, and this is likely to be partly responsible for the large scatter of recovery lengths to equilibrium conditions reported in the literature. Our results also reveal that smaller energetic scales in the near-wall region recover to an equilibrium state associated with the new wall conditions within one boundary layer thickness downstream of the transition, while larger energetic scales exhibit an over-energised state for several boundary layer thicknesses downstream of the transition. Based on these observations, an alternative approach to estimating the wall-shear stress from the premultiplied energy spectrum is proposed.

Key words: turbulent boundary layers

1. Introduction

Surface roughness with heterogeneity is present in wall-bounded turbulent flows in a variety of conditions. Examples are the patchiness of biofouling on the hull of a

[†]Email address for correspondence: mogengl@student.unimelb.edu.au

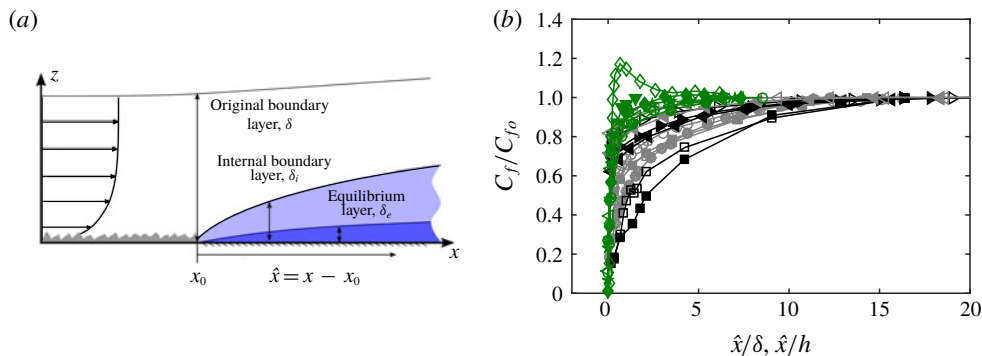


FIGURE 1. (Colour online) (a) Schematic of a turbulent boundary layer flow over a rough-to-smooth change in surface condition. Flow is from left to right and $\hat{x}=x - x_0$ represents the fetch measured from the rough-to-smooth transition which occurs at $x = x_0$. (b) Recovery of skin-friction coefficient C_f downstream of a rough-to-smooth transition from a range of numerical and experimental databases. Details of each dataset are summarised in table 1. The colours of the symbols indicate the region where C_f is determined: green represents C_f measured within the viscous sublayer or directly at the wall, grey is the buffer layer and black is the logarithmic layer. Results are normalised by C_{f_0} , which corresponds to the most downstream reported C_f measurement from each dataset.

ship or the changes in the surface roughness conditions that occur at the interface between forest and grasslands. Though such heterogeneity can occur in a wide range of configurations, one simple configuration of this problem is to consider a sudden transition from a rough to a smooth surface occurring in the streamwise direction, as examined in the seminal work of Antonia & Luxton (1972). This configuration is best described with reference to figure 1(a), where upstream of the transition, an equilibrium rough-wall boundary layer has developed over a rough fetch. Following the transition, the new smooth-wall condition initially modifies the near-wall region. The effect of the new wall condition then gradually propagates towards the interior of the flow with increasing distance downstream of the transition. The layer that separates the modified near-wall region (which ‘sees’ the new smooth-wall condition) from the unaffected oncoming flow further away from the wall (which ‘remembers’ the rough-wall condition) is generally referred to as the internal boundary layer (IBL) with a thickness denoted by δ_i . The layer where the flow is in equilibrium with the new wall condition is referred to as the equilibrium layer (Garratt 1990; Savelyev & Taylor 2005) with thickness δ_e . In most cases, the majority of the flow within the IBL is still in non-equilibrium states with the local wall condition, and a general consensus is that δ_e takes up about 5% of δ_i defined based on the shear stress profile adjustment for a flow over rough-to-smooth change (see Shir 1972; Rao, Wyngaard & Coté 1974).

Although streamwise rough-to-smooth heterogeneity has been studied extensively over the past few decades (Bradley 1968; Antonia & Luxton 1972; Shir 1972; Rao *et al.* 1974; Chamorro & Porté-Agel 2009; Hanson & Ganapathisubramani 2016), to date, the recovery to equilibrium conditions of the new surface following such a transition is far from understood. For example, determining the local wall-shear stress τ_w after the transition (and subsequently the friction velocity U_τ) has been hampered by reliability issues. Antonia & Luxton (1972) used three different techniques to determine τ_w following a rough-to-smooth transition (Clauser chart, Preston tube and

Reference	Symbol	Technique	Region	Geometry	Roughness	Re_τ	k_τ^+	$\delta/k_p, h/k_p$	$\Delta H/k_p$
Hanson & Ganapathisubramani (2016)	○	Preston tube	Buffer	Boundary layer	P16 grit	2.3×10^3	209	29	N/A
	●				Mesh	3.5×10^3	1300	19	
Antonia & Luxton (1972)	□	Clauser chart	Log	Boundary layer	Square ribs	3.4×10^3	—	22	0
	■		Log			6.1×10^3	—	22	0
	□	Preston tube	Buffer			3.4×10^3	—	22	0
	■		Buffer			6.1×10^3	—	22	0
Saito & Pullin (2014)	▽		Buffer	Full channel	Modelled	2.1×10^4	21		0
	▽	Wall-modelled large-eddy simulation	Buffer	(both sides roughened)		2.2×10^5	219		0
	▼		Log			2.5×10^6	2458	N/A	0
	△		Log			2.3×10^6	225		0
	▲		Log			2.4×10^6	1193		0
Ismail <i>et al.</i> (2018b)	◇		Wall	Full channel (one side roughened)	Square ribs	5.0×10^2	343	12	-1
	▽	DNS				2.2×10^3	1540	12	-1
	★					2.1×10^3	1105	16	-1
	◆					2.4×10^3	2105	9.6	-1
	○	DNS	Wall	Full channel (one side roughened)		Three-dimensional cubes	1.6×10^3	338	12
Ismail <i>et al.</i> (2018a)	●					1.5×10^3	233	12	-1
	▼	Near-wall hotwire	Viscous	Boundary layer	Mesh	1.5×10^4	479	133	-0.5

TABLE 1. (Colour online) Summary of published data on wall-shear stress recovery in wall-bounded flows downstream of a rough-to-smooth transition. Parameters Re_τ and k_τ^+ correspond to the friction Reynolds number and the equivalent sand grain roughness Reynolds number at the rough-to-smooth transition, and k_p is the maximum roughness height between the crest and trough. Parameter ΔH is the height increment from the roughness crest to the smooth surface downstream; $\Delta H = 0$ implies that the smooth wall is aligned with the roughness crest, whereas $\Delta H < 0$ indicates that the smooth wall is below the roughness crest.

the momentum integral equation) noting that, ‘... none of the standard smooth-wall methods of obtaining skin friction from the mean profile is reliable for some distance downstream from the roughness change’.

The scatter in the recovery of the wall-shear stress is highlighted in figure 1(b), which collates the skin-friction coefficient, $C_f = \tau_w / ((1/2)\rho U_\infty^2)$ (where U_∞ is the free-stream velocity and ρ is the air density), from a collection of experimental and numerical databases (see table 1 for a summary of key parameters of each database). This leads to an uncertainty in drag over $0 < \hat{x}/\delta < 10$ (δ is defined as the z location where $\bar{U} = 0.99U_\infty$ at the roughness transition), defined as $C_{D10} \equiv \int_0^{10} C_f d(\hat{x}/\delta)$, up to 40%. In part, the disagreement between the databases is due to differences in Reynolds numbers, flow geometry (internal versus external wall-bounded flows) and surface conditions (the magnitude and type of the roughness change at $x = x_0$); however, here we demonstrate that the method of C_f measurement can introduce systematic variation in the reported C_f recovery. The colours of the symbols in figure 1(b) broadly distinguish the data based on the C_f measurement technique, with the black symbols showing methods operating in the log region, the grey symbols indicating the buffer layer and the green symbols showing measurements from the viscous sublayer (oil-film interferometry (OFI), near-wall gradient, direct numerical simulation (DNS), etc). We conjecture that when τ_w is estimated directly at the wall or from the viscous region, a higher C_f or a faster recovery is observed in general. Conversely, when inferred from velocity signals further away from the wall, lower C_f and longer recovery lengths are observed. It is worth noting that similar challenges can arise when estimating τ_w in numerical studies. For example, many works bypass the expense of simulating changing surface conditions directly (using DNS) through the use of Reynolds-averaged Navier–Stokes (Rao *et al.* 1974) or wall-modelled large-eddy simulations (Bou-Zeid, Meneveau & Parlange 2004; Saito & Pullin 2014; Silva Lopes, Palma & Piomelli 2015). In both approaches, the near-wall turbulence (below the logarithmic region) is inferred from modelling assumptions, which may not be applicable for flows in non-equilibrium conditions. Here we use both experimental and numerical databases to provide evidence for the reasoning above and explain why different methods of measuring C_f can explain some of the discrepancies in the literature.

Throughout this paper, the coordinates x , y and z refer to the streamwise, spanwise and wall-normal directions, respectively. The rough-to-smooth transition occurs at $x = x_0$, and we use the definition $\hat{x} = x - x_0$ for the fetch on the smooth wall downstream. Corresponding instantaneous streamwise, spanwise and wall-normal velocities are represented by \tilde{U} , \tilde{V} and \tilde{W} , respectively, with velocity fluctuations given by lower-case letters. Overbars indicate spanwise- and/or time-averaged quantities and the superscript $+$ refers to normalisation by local inner scales with $U_\tau = U_\tau(\hat{x})$. For example, we use $l^+ = lU_\tau/\nu$ for length and $\tilde{U}^+ = \tilde{U}/U_\tau$ for velocity, where U_τ is the friction velocity and ν is the kinematic viscosity of the fluid.

2. Experimental databases

The current experimental databases are acquired in an open-return boundary layer wind tunnel facility in the Walter Basset Aerodynamics Laboratory at the University of Melbourne. Readers are referred to Marusic & Perry (1995), Harun *et al.* (2013), Nugroho, Hutchins & Monty (2013) and Kevin *et al.* (2015) for further details of this facility. The turbulent boundary layer is tripped by a strip of P40 sandpaper at the inlet of the working section, and then develops on the tunnel floor.

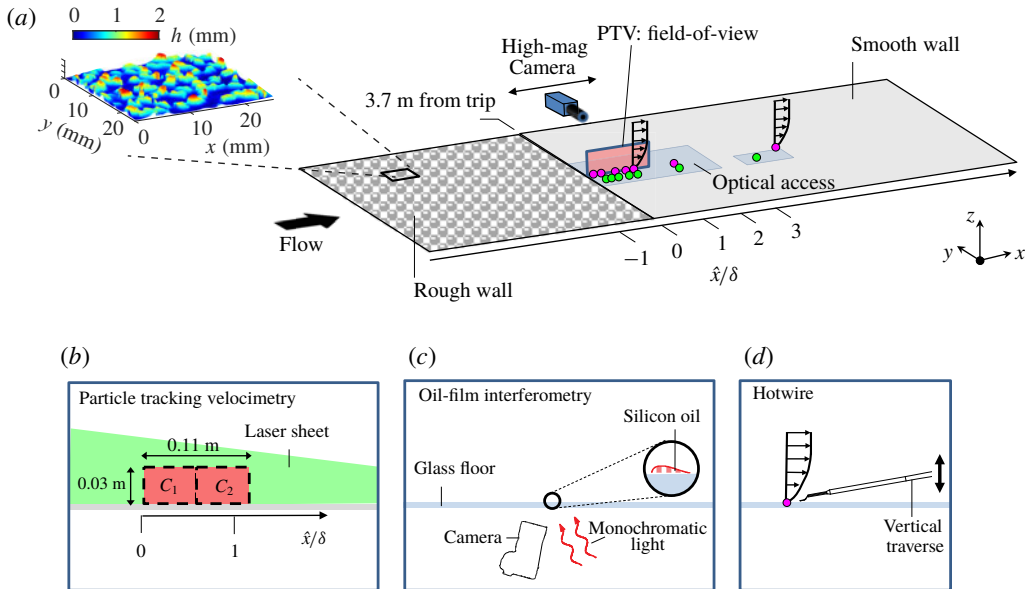


FIGURE 2. (Colour online) (a) Overview of the experimental campaign in the open-return boundary layer wind tunnel facility at $Re_\tau \approx 4100$. The ● (magenta) symbols correspond to the locations of the hotwire wall-normal profiles and the ● (green) symbols correspond to the locations of OFI measurements. The colour contours in (a) illustrate the topography of the P16 grit sandpaper which is employed as the rough-walled surface. (b) The particle tracking velocimetry, (c) the oil-film interferometry and (d) the hotwire traverse systems. Regions C_1 and C_2 in (b) correspond to the field of views captured non-simultaneously using a scientific double-frame camera with a vertical laser sheet that is projected upstream through the working section.

The arrangements of the experimental campaign consisting of hotwire boundary layer traverses, OFI measurements and particle tracking velocimetry (PTV) measurements are depicted in figure 2. For the present work, the first 3.7 m of the tunnel surface is covered by P16 grit sandpaper, while the remaining streamwise length (1.9 m) is a smooth surface. Details of the roughness parameters are obtained by scanning a $60 \text{ mm} \times 60 \text{ mm}$ section of the sandpaper using an in-house-built laser scanner. The maximum roughness height between the crest and trough is $k_p \approx 2 \text{ mm}$, which is equivalently 2% of the boundary layer thickness δ at the surface transition. The roughness crest is approximately 3 mm above the smooth surface, corresponding to $\Delta H/k_p = -1.5$. The root-mean-squared roughness height (k_{rms}) of this surface is 0.387 mm, and the equivalent sandgrain roughness is $k_s \approx 2.8 \text{ mm}$, yielding $k_s^+ \approx 130$ at x_0 . The distribution of pressure coefficient $C_p \equiv (p - p_{ref}) / ((1/2)\rho U_\infty^2)$ over the working section is obtained using static pressure taps mounted on the tunnel roof, and $C_p = 0 \pm 0.01$ is achieved in most areas with no distinguishable localised pressure gradient observed in the vicinity of the rough-to-smooth change. The range of C_p variation is comparable with that of other zero-pressure gradient studies conducted in the same facility (see Harun *et al.* 2013; Nugroho 2015); thus the pressure gradient effect over the current rough-to-smooth surface can be considered negligible. All measurements are acquired at a nominal free-stream velocity of $U_\infty \approx 15 \text{ m s}^{-1}$. The friction Reynolds number ($Re_\tau \equiv \delta U_\tau / \nu$) immediately upstream of the transition location over the rough surface is $Re_\tau \approx 4100$.

2.1. Hotwire anemometry

A conventional single-wire hotwire probe of $2.5 \mu\text{m}$ in diameter is operated by an in-house Melbourne University constant temperature anemometer (MUCTA). Calibration is performed following an *in situ* procedure before and after each measurement. Thereafter, any drift is corrected by an intermediate single-point recalibration (ISPR) method discussed in Talluru *et al.* (2014), where the hotwire voltage is periodically monitored in the free stream. The uncertainty in \bar{U} and $\overline{u^2}$ is usually within 1% and 3%, respectively (Yavuzkurt 1984). The method of calibration drift correction proposed by Talluru *et al.* (2014) employed here offers further improvements. Boundary layer profiles are taken at $\hat{x} = 10, 30, 60, 90, 180, 360$ and 1190 mm , corresponding to $\hat{x}/\delta = 0.11, 0.34, 0.68, 1.0, 2.0, 4.1$ and 13.4 (● (magenta) symbols in figure 2). Each profile consists of 50 logarithmically spaced measurement locations in the wall-normal direction for $0.4 \text{ mm} \lesssim z \lesssim 2\delta$, and the voltage signal is sampled at 30 kHz for 150 s at each wall-normal location, corresponding to a sample interval $\Delta t^+ < 0.6$ and a total sampling duration T_{samp} of 2.25×10^4 boundary-layer turnovers ($T_{\text{samp}} U_\infty / \delta$).

2.2. Particle tracking velocimetry

To complement the hotwire databases with near-wall information, high-magnification PTV measurements are performed immediately downstream of the rough-to-smooth transition. The magnified field of view targeted at the near-wall region is ideally suited for this analysis, providing access to well-resolved velocity signals within the viscous sublayer region of the flow ($z^+ \lesssim 4$). A field of view of $1.2\delta \times 0.3\delta$ is achieved by stitching two non-simultaneous measurements obtained at different streamwise locations C_1 and C_2 , as shown in the inset of figure 2. A calibration target that spans the entire extent of the field of view, which has been proven to work well for multi-camera large-field-of-view experiments (see de Silva *et al.* 2014), is employed to stitch the time-averaged statistics from the different camera positions together and also to account for image distortions. The uncertainty in the calibration of the pixel size in the current particle image velocimetry (PIV)/PTV measurement is approximately 0.6%, leading to a variation of 1.2% in τ_w .

The experimental image pairs are processed using an in-house PIV/PTV package developed at the University of Melbourne (de Silva *et al.* 2014). To enhance the near-wall resolution, a hybrid PIV–PTV algorithm (Cowen & Monismith 1997) is used with 128×8 (75% overlap) and 4×4 pixel integration window for the PIV and PTV pass, respectively. The wall-normal location of the PTV database is refined to subpixel accuracy by correlating the near-wall particles and their reflections on a frame-by-frame basis.

2.3. Oil-film interferometry

The wall-shear stress, τ_w , is measured using OFI (Fernholz *et al.* 1996; Zanon, Durst & Nagib 2003). The experimental configuration is illustrated in figure 2(c). A silicon oil droplet is placed on a clear glass surface and illuminated by a monochromatic light source from a sodium lamp. The resulting interference pattern is captured using a Nikon D800 DSLR camera. In a similar fashion to the PTV measurements, the field of view of the OFI measurements is calibrated with a calibration grid featuring a 2.5 mm dot spacing, providing a conversion from image to physical space.

For each OFI database, 100 images are captured with a time interval of 5 s between images. The image sequences are then processed using a fast-Fourier-transform-based

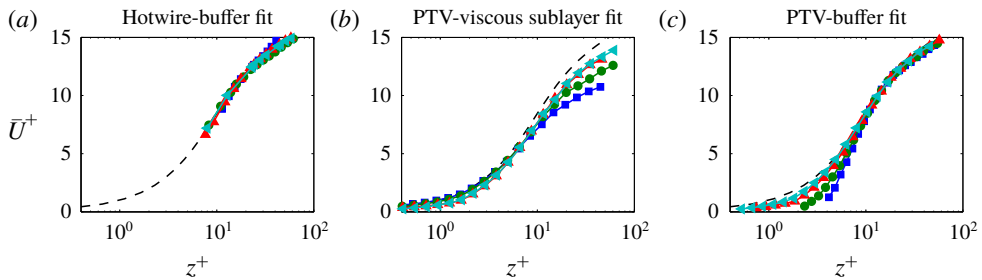


FIGURE 3. (Colour online) Mean streamwise velocity statistics from hotwire and PTV experimental data at $Re_\tau \approx 4100$. Normalisation is by friction velocity, U_τ , estimated from a fit to the (a,c) buffer and (b) viscous sublayer regions, and \hat{x} corresponds to the streamwise distance from the rough-to-smooth transition. The black dashed line corresponds to a reference smooth-walled boundary layer DNS database at $Re_\tau \approx 2500$ (Sillero, Jiménez & Moser 2013) and the \blacksquare (blue), \bullet (green), \blacktriangle (red) and \blacktriangleleft (cyan) symbols correspond to results at $\hat{x}/\delta = 0.11, 0.34, 0.68$ and 1.0 , respectively.

algorithm (Ng *et al.* 2007) to extract the fringe spacing of the interferograms. Thereafter, a linear trend is fitted to the extracted fringe spacing of the interferograms versus time to evaluate τ_w . The main sources of uncertainty in the current OFI measurement lie in the calibration of oil viscosity and the camera calibration, and the relative error in the oil viscosity ν and the pixel size is estimated to be 0.5% and 0.6%, respectively. Overall, considering other uncertainties associated with the fringe extraction and dust contamination of the oil film, the repeatability in τ_w obtained by OFI in the current study is estimated to be $\pm 1.5\%$.

3. Experimental results

Figure 3(a) shows the hotwire-measured mean streamwise velocity profiles \bar{U} at various locations downstream of the rough-to-smooth transition. Due to an inability to make hotwire measurements in the viscous sublayer, the friction velocity $U_\tau(\hat{x})$ for this figure has initially been estimated from a least squares fit in the buffer region ($10 \lesssim z^+ \lesssim 30$) to a reference smooth-walled DNS profile from Sillero *et al.* (2013). We note that, due to uncertainty associated with the precise wall-normal location of the hotwire measurements, a wall-normal shift is included as a free parameter in the fit (the wall correction returned by the fit is typically within 0.35 mm). As dictated by the fit, the profiles in figure 3(a) exhibit an excellent collapse in the buffer region ($10 \lesssim z^+ \lesssim 30$) to the canonical case (dashed line). Critically, however, the quality of agreement in the near-wall region cannot be assessed due to the lack of near-wall data from the hotwire measurements.

To overcome this shortcoming, figure 3(b) presents \bar{U} from the PTV database, where a more direct estimate of τ_w (hence U_τ) is accessible as we are able to compute U_τ using a least squares fit in the viscous sublayer ($z^+ \lesssim 4$) following

$$U_\tau = \sqrt{\frac{\tau_w}{\rho}} = \sqrt{\nu \frac{\partial \bar{U}}{\partial z}}. \quad (3.1)$$

Scaled in this way, the PTV data must exhibit collapse in the near-wall region, and figure 3(b) shows a growing departure from the reference smooth-wall profile with

increasing z in the buffer region ($10 \lesssim z^+ \lesssim 30$), demonstrating that U_τ (and hence τ_w) estimated from the buffer region and viscous sublayer region differ substantially. It should be noted that U_τ obtained from the near-wall gradient of the PTV data is believed to represent the correct estimate and matches very closely the value measured by OFI (to be detailed further in figure 5). If we ascribe greater confidence to the PTV-measured U_τ , the most likely interpretation here is that the buffer region is yet to recover to an equilibrium state to the new surface conditions, and consequently underestimates the wall-shear stress immediately downstream of a rough-to-smooth transition.

To further illustrate this behaviour, figure 3(c) shows \bar{U} from the PTV database normalised by a U_τ estimated from the buffer region (following the same procedure as applied to the hotwire data in figure 3a). Despite the subpixel accuracy in the wall location for the PTV data, a free parameter accounting for the wall-normal shift is also included in the fit to fully replicate the hotwire procedure. The results reveal a lack of agreement in the near-wall region below $z^+ \lesssim 10$, which confirms that the collapse observed in figure 3(a,c) in the buffer region ($10 \lesssim z^+ \lesssim 30$) appears to be an artefact of an erroneous U_τ . It should also be noted that the estimated IBL thickness δ_i is $O(100)$ viscous units above the buffer region beyond $\hat{x}/\delta > 0.25$ for the present database. Therefore, our findings confirm that a substantial part of the internal layer remains in a non-equilibrium state with the local wall condition (see also Antonia & Luxton 1972; Shir 1972; Rao *et al.* 1974).

In the present set of experiments, a Preston tube is not tested as a method to measure wall-shear stress. However, since the typical diameter of a Preston tube is $O(1)$ mm which for this flow is approximately 30 wall units, we would expect similar errors from this device to those observed for the buffer layer fit shown in figure 3(a,c). In short, calibrations of Preston tubes are conducted under equilibrium smooth-walled conditions (see Patel 1965), and hence we would expect measurements with such a device to be compromised in the non-equilibrium buffer region flows occurring immediately downstream of a change in surface roughness.

Figure 4 presents the streamwise turbulence intensities, $\overline{u^2}^+$, from the PTV database, where figures 4(a) and 4(b) are normalised by U_τ estimated from the buffer and viscous sublayer regions, respectively. The results show that the $\overline{u^2}^+$ profile appears to be significantly altered by the inaccurate estimate of τ_w (hence U_τ) based on a buffer fit immediately after the rough-to-smooth transition. For example, both profiles exhibit an energetic site which develops at a wall-normal location in close proximity to the ‘inner peak’ reported in equilibrium smooth-walled boundary layers (Smits, McKeon & Marusic 2011). However, figure 4(a) reveals a sharp reduction in the magnitude of this energetic site with increasing \hat{x} , while figure 4(b) exhibits only a subtle reduction in magnitude. As a consequence, these shortcomings could compromise any attempts at establishing the appropriate scaling or modelling of the flow behaviour after a sudden change in surface conditions. We note similar behaviour for the inner-scaled wall-normal turbulence intensity, $\overline{w^2}^+$, which is not reproduced here for brevity.

3.1. Skin-friction coefficient

Figure 5 compiles the skin-friction coefficient, C_f , downstream of the rough-to-smooth surface transition for all the current experimental databases. For PTV and OFI, C_f is measured directly from the near-wall velocity gradient deep in the viscous sublayer, while the hotwire databases use either a buffer fit in the range $10 < z^+ < 30$ or a

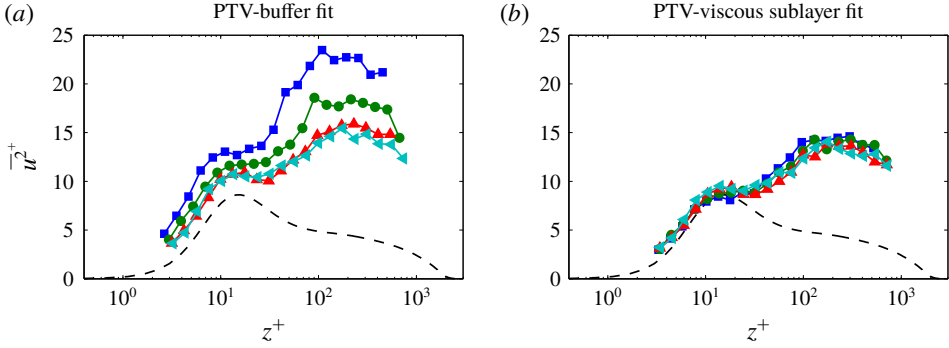


FIGURE 4. (Colour online) Streamwise turbulence intensity, $\overline{u^2}^+$, from the PTV experimental data at $Re_\tau \approx 4100$. Normalisation is by friction velocity, U_τ , estimated from a fit to the (a) buffer region and (b) viscous sublayer. The black dashed line corresponds to a reference smooth-walled boundary layer DNS database at $Re_\tau \approx 2500$ (Sillero *et al.* 2013) and the \blacksquare (blue), \bullet (green), \blacktriangle (red) and \blacktriangleleft (cyan) symbols correspond to results at $\hat{x}/\delta = 0.11, 0.34, 0.68$ and 1.0 , respectively.

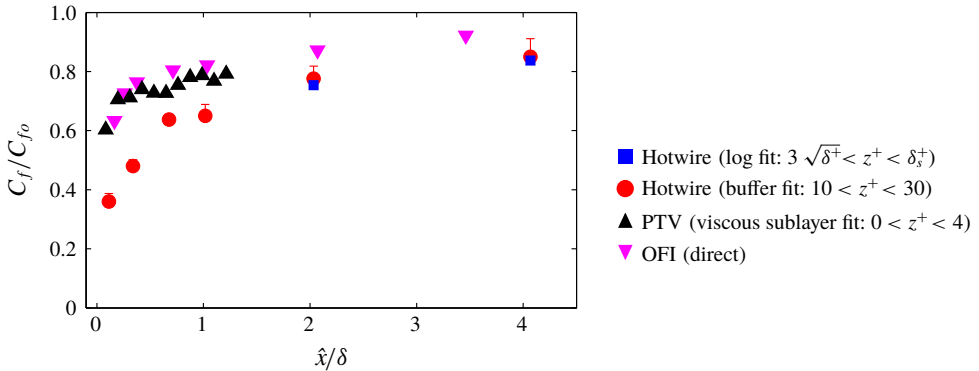


FIGURE 5. (Colour online) Skin-friction coefficient, C_f , estimates from the hotwire, OFI and PTV experimental data at $Re_\tau \approx 4100$. Normalisation is by C_{f0} , which corresponds to the last measured magnitude of C_f from the OFI database at $\hat{x}/\delta = 13.4$.

Clauser fit (Clauser 1954) in the expected log region. The Musker profile (Musker 1979) and composite velocity profile (Chauhan, Monkewitz & Nagib 2009) instead of the DNS data are also employed as the reference profile in the buffer region fit, and the scatter in the resulting C_f is usually within 5%, as shown by the error bars in figure 5. Note that this error associated with the choice of the reference profile also presents in fully equilibrium smooth-wall boundary layers; therefore the fitted results should be interpreted with caution in general. For the Clauser fit we use constants $\kappa = 0.384$ and $B = 4.17$ in the range $3\sqrt{\delta^+} < z^+ < \delta_s^+$ (blue symbols). Here, the assumed upper limit of the logarithmic region δ_s^+ is defined as $\min(0.15\delta^+, 0.6\delta_i^+)$, where δ^+ is the local viscous-scaled boundary layer thickness and δ_i is the IBL thickness, defined as the ‘knee point’ in the $\overline{u^2}$ profile following Efros & Krogstad (2011). We prefer this method to identify δ_i as the distinction associated with the roughness change is more pronounced in $\overline{u^2}$ compared to \overline{U} and less subject to small

uncertainties in the measurement, resulting in a more robust estimation of δ_i . The fit range is chosen in accordance with Marusic *et al.* (2013), with an extra constraint to the upper limit as $0.6\delta_i^+$, as a different U_τ is expected above the IBL (Elliott 1958). The coefficient 0.6 is empirically chosen to eliminate any ‘kink’ in the mean velocity profile related to the IBL. Clauser fit results are not shown for $\hat{x}/\delta < 2$ as δ_i^+ is small in the immediate downstream of the surface transition, and thus there is an insufficient number of data points to perform the fit. Note that by performing a Clauser fit we do not imply the existence of a fully recovered log region in the immediate downstream of a rough-to-smooth transition. Our intention here is to demonstrate that, similar to the buffer fit as discussed in §3, if one takes the mean velocity data downstream of a rough-to-smooth transition and uses these to compute U_τ via a Clauser fit, an erroneous U_τ will result. It is worth emphasising that the spanwise variation in wall-shear stress can be appreciable immediately downstream of the rough-to-smooth change due to the effect of individual roughness elements (Wu, Ren & Tang 2013; Mogeng *et al.* 2018). Consequently, since the hotwire, PTV and OFI measurements are made at slightly different spanwise locations, any comparisons between them in the range $\hat{x}/\delta < 0.4$ (corresponding to $\hat{x}/k_p < 15$, approximately four times the reattachment length as reported by Wu *et al.* (2013)) should be treated with caution. Nevertheless, if we define a recovery length L as the downstream fetch where the local C_f reaches, for example, 80% of the full-recovery value C_{f0} , then $L = 0.8\delta$ for the OFI and PTV C_f values, whereas $L = 2\delta$ for the buffer fit results. These results confirm that even beyond $\hat{x}/\delta > 0.4$ downstream of the transition the magnitude of C_f is lower and exhibits a more gradual recovery as a function of \hat{x} when estimated away from the wall (buffer and Clauser fits), as compared to estimates from closer to the wall (viscous sublayer) or at the wall (OFI). These discrepancies are likely to play a significant role in the wide range of recovery trends reported for C_f in past works (see figure 1*b*). In general, and to within experimental error, the OFI- and PTV-determined wall-shear stresses are in close agreement. These observations will be revisited in §4.1, where comparisons will be drawn to a DNS of a rough-to-smooth surface change in a wall-bounded flow.

4. Numerical experiment of a rough-to-smooth transition

The results presented in the preceding discussions have highlighted that the accuracy of most ‘indirect’ experimental techniques for estimating τ_w will be compromised in non-equilibrium conditions which persist in the near-wall and buffer region of the internal layer for surprisingly large distances downstream of the surface transition. To complement the experiments, a DNS database was generated and analysed to test for this behaviour.

The DNS was performed using a well-validated, fourth-order finite-difference code (Chung, Monty & Ooi 2014; Chung *et al.* 2015) with an immersed boundary method used to implement the roughness (Scotti 2006; Rouhi, Chung & Hutchins 2019). The open-channel computational domain for the present simulations spans $24h \times 3.2h \times h$ in the streamwise, spanwise and wall-normal directions, as shown in figure 6(*a*). Periodic boundary conditions are applied in the streamwise and spanwise directions and a free-slip condition is employed at the top boundary. For $0 < x < 12h$ the bottom wall of the channel is a no-slip rough boundary, which then has an abrupt transition to a smooth-wall no-slip boundary for $12h < x < 24h$. The rough patches are composed of an ‘egg carton’ roughness (Chan *et al.* 2015) with a roughness height of $0.056h$ and a roughness wavelength of $0.40h$, where h corresponds to the channel

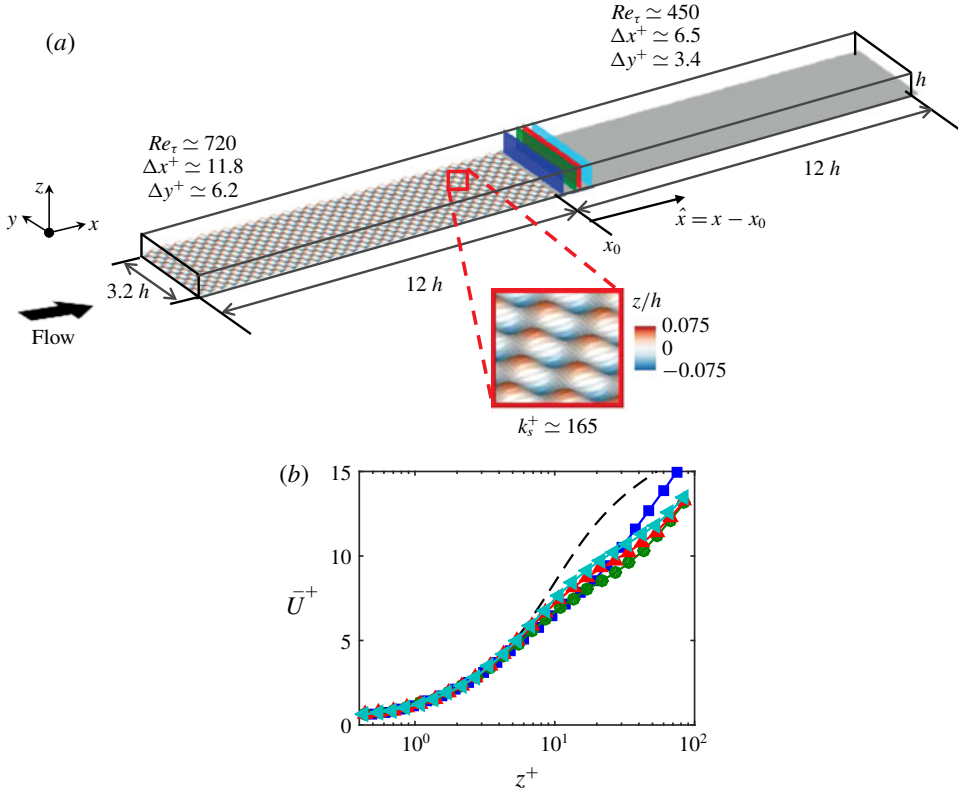


FIGURE 6. (Colour online) (a) The computational domain for the DNS database. The bottom surface is coloured according to the surface elevation relative to the location of the smooth-wall plane. The inset shows a magnified view of the ‘egg carton’ roughness employed. The reported Re_τ on each patch corresponds to the recovered region and the wall-parallel resolutions Δx^+ and Δy^+ are normalised by the asymptotic values of U_τ on each patch. (b) Streamwise mean velocity, \bar{U} , normalised by the local U_τ , from the DNS database at $Re_\tau \approx 590$. The black dashed line corresponds to a reference DNS channel flow database at $Re_\tau = 934$ (del Alamo *et al.* 2004). The \blacksquare (blue), \bullet (green), \blacktriangle (red) and \blacktriangleleft (cyan) symbols correspond to $\hat{x}/h = 0.11, 0.34, 0.68$ and 1.0 respectively, as shown by the wall-normal planes in (a), where \hat{x} corresponds to the streamwise distance from the rough-to-smooth transition.

height. Further, the mid-height between the roughness crests and troughs is aligned with the smooth wall, corresponding to $\Delta H/k_p = -0.5$. The flow at the end of the rough patch is in the fully rough regime with an equivalent sandgrain roughness of $k_s^+ \approx 165$. The driving pressure gradient is set such that the global Reynolds number is maintained at $Re_\tau = hU_{\tau_0}/\nu = 590$, where U_{τ_0} is the global friction velocity. The flow is fully resolved down to the roughness elements (approximately 24 points per roughness wavelength in the streamwise direction and 48 points in the spanwise direction) with no modelling assumptions. The wall-shear stress τ_w over the smooth surface (and hence U_τ) is computed from the gradient of the streamwise mean flow at the grid point closest to the wall (see (3.1)), which is located below $z^+ < 0.5$ for the present case. Further details of the DNS database can be found in Rouhi *et al.* (2019).

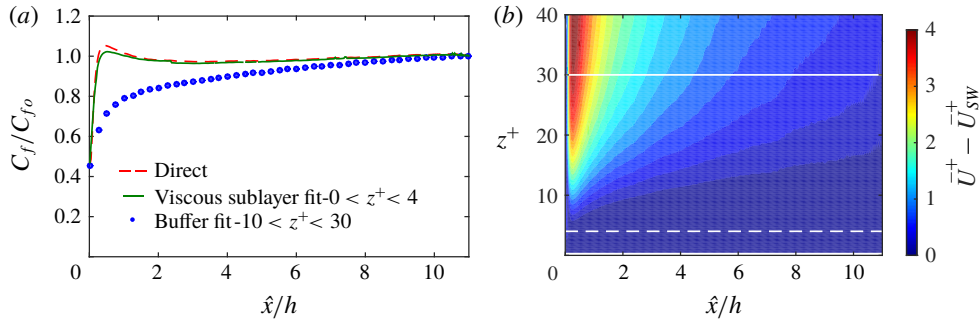


FIGURE 7. (Colour online) (a) Skin-friction coefficient, C_f , estimates from the DNS database at $Re_\tau \approx 590$. Normalisation is by C_{f0} , which corresponds to the last measured magnitude of C_f for each case. (b) Colour contours of the difference in the mean streamwise velocity ($\bar{U}_d^+ = \bar{U}^+ - \bar{U}_{sw}^+$) immediately downstream of a rough-to-smooth transition relative to a reference smooth-walled open-channel flow, \bar{U}_{sw}^+ , at a comparable Re_τ . Results are computed from DNS data where U_τ can be directly estimated from the velocity gradient at the wall. The white dashed and solid lines correspond to the upper limit of the viscous sublayer and buffer region, respectively.

4.1. Results from a rough-to-smooth DNS database

Figure 6(b) presents the inner-normalised streamwise mean velocity \bar{U}^+ from the DNS database at various locations downstream of the rough-to-smooth transition. In the viscous sublayer ($z^+ \lesssim 4$) the results exhibit good agreement with the reference smooth-walled profile (dashed line, taken from del Alamo *et al.* (2004) at $Re_\tau = 934$). However, in the same manner as observed previously for the correctly scaled PTV experiments, the buffer region and beyond exhibits poor agreement. Note that the mean flow recovers to the equilibrium state monotonically in the experiments as shown in figure 3(b), whereas in the simulation the mean velocity profile at $\hat{x}/h = 0.11$ (the blue curve) overshoots the other three profiles further downstream. This discrepancy of the flow behaviour in the vicinity of the roughness transition can be attributed to the difference in the roughness height ($\delta/k_p \approx 45$ in the experiment versus $h/k_p \approx 9$ in the simulation). These results confirm that the buffer region requires a surprisingly long recovery length downstream of a rough-to-smooth transition to reach an equilibrium state that reflects the new smooth-wall condition. As a consequence, any estimate of τ_w (hence U_τ) obtained from the buffer region or above will be compromised. The extent of this discrepancy is highlighted by plotting the skin-friction coefficient C_f calculated from various methods, downstream of the rough-to-smooth transition for the DNS data. These results are presented in figure 7. The blue dotted curve shows the case where τ_w is estimated from the buffer region (fit in the range $10 \lesssim z^+ \lesssim 30$). This case exhibits a much longer and more gradual C_f recovery as compared to the direct measure from the DNS (red dashed curve), obtained from the velocity gradient at the first off-wall grid cell). On the other hand, when C_f is estimated from the viscous sublayer region ($z^+ \lesssim 4$, the green curve of figure 7a), we observe closer agreement to the direct measure from the DNS database. This is promising for experiments, where the viscous sublayer is certainly more accessible to measurements than the gradient at the wall (e.g. the PTV measurements presented previously). For the present case, the error between the viscous sublayer fit and the wall gradient method drops from approximately 5% to 1%

as \hat{x}/h increases from 0 to 2. These observations from the DNS data in figure 7 reconfirm the broad trends of C_f recovery for the various τ_w estimation techniques observed from the experiments (figure 5) and past works (figure 1*b*), thus providing an explanation for some of the scatter observed. It is noted from a comparison of figure 7 with figure 5 that the buffer-layer-computed C_f recovery following the rough-to-smooth transition in the DNS is quite different from that of the experiments, with the DNS indicating a slower recovery. This suggests that the DNS retains non-equilibrium effects in the buffer layer to a greater distance downstream of the rough-to-smooth transition than the experiments. It is noted that the DNS is at a much lower Reynolds number, with a much greater k_p/δ and is an open-channel geometry, all of which would likely affect the recovery. Regardless, in the context of this study the overarching message is clear from both experiments and DNS: estimates of C_f made further from the wall (in the buffer or log region) can be surprisingly inaccurate, even at several boundary layer thicknesses downstream of the transition.

We additionally note that the DNS data exhibit an overshoot of C_f immediately downstream of the rough-to-smooth transition which is notably absent in the experiments (figure 5). This might be related to the difference of the step height ΔH at the roughness transition, as a greater down step is present in the experiment ($\Delta H/k_p = -1.5$) compared to the simulation ($\Delta H/k_p = -0.5$). Another possible factor for this behaviour might be associated with the lower Re_τ of the DNS database or the difference in geometry (Appendix). Further, the results from the DNS database also appear to exhibit a much slower recovery of the buffer region to the new wall conditions as a function of h (or δ) when compared to the experiments. This observation may be associated with the significantly larger k_p/δ ratio in the DNS databases compared to the experiments ($k_s/h \approx 0.2$ for the DNS, compared to $k_s/\delta \approx 0.04$ for the experiments). In any case, the broader trends from the DNS database confirm that any estimation of τ_w made using the data above the viscous sublayer region is compromised for several δ downstream of a rough-to-smooth transition.

In order to quantify the rate of recovery of a wall-bounded flow to equilibrium conditions downstream of a rough-to-smooth surface change, figure 7(*b*) presents colour contours of the difference in the streamwise mean flow, \overline{U}_d^+ , after the rough-to-smooth transition relative to a fully developed smooth-walled flow, \overline{U}_{sw}^+ , from a DNS database in the present study at matched Re_τ . In this case, a direct measure of the velocity gradient at the wall and hence τ_w is available from both databases. For simplicity, comparisons are drawn for the same flow geometry (open-channel flow) to avoid the spatial growth of a turbulent boundary layer. The colour contours of \overline{U}_d^+ indicate an almost immediate recovery in the viscous sublayer region ($z^+ \lesssim 4$, indicated by the horizontal dashed line) to an equilibrium state of a smooth-walled channel flow, while further from the wall, in the buffer region and beyond, larger discrepancies are present throughout the range $0 < \hat{x}/h < 5$. These results confirm that (for a channel flow, and consistent with boundary layers) only beyond $\hat{x}/h \gtrsim 5$ can we reliably employ diagnostic tools that operate in the buffer region to estimate τ_w .

5. Premultiplied energy spectrum

From the preceding discussions, it is clear that the boundary layer gradually recovers to an equilibrium state of the new wall conditions after several boundary layer thicknesses downstream of the transition, yet it is not obvious which scales are responsible for this slow recovery. To provide a clearer picture of the recovery

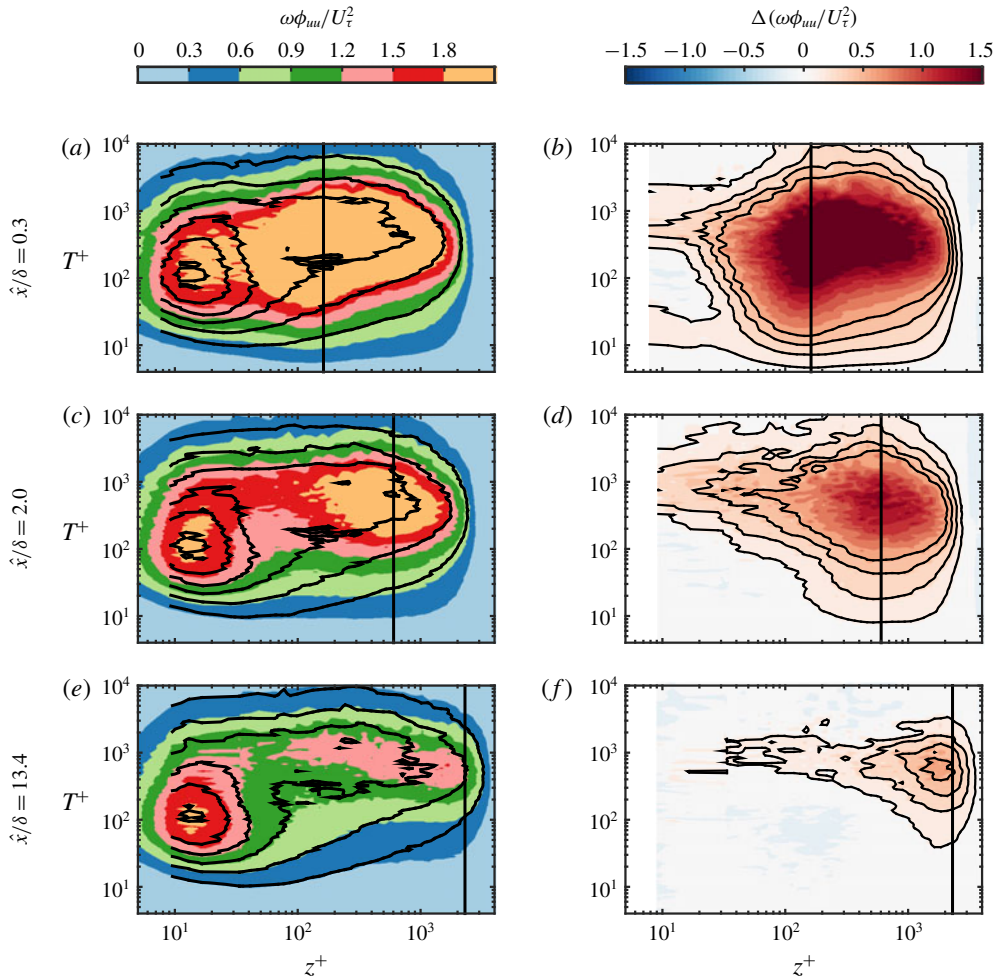


FIGURE 8. (Colour online) Premultiplied energy spectra $\omega\phi_{uu}/U_\tau^2$ at $\hat{x}/\delta = (a)$ 0.3, (c) 2.0 and (e) 13.4. The coloured contour is the rough-to-smooth case, and the black contour lines are from a reference smooth-wall experiment at matched Re_τ , with contour levels of $\omega\phi_{uu}/U_\tau^2 = 0, 0.3, 0.6, 0.9, 1.2, 1.5, 1.8$. The difference between the rough-to-smooth case and the reference smooth case $\Delta(\omega\phi_{uu}/U_\tau^2)$ at streamwise locations $\hat{x}/\delta = (b)$ 0.3, (d) 2.0 and (f) 13.4. The four black contour lines indicate 0.15, 0.30, 0.45 and 0.60. The vertical black lines in all the panels represent the location of the IBL estimated from the turbulence intensity profile following Efros & Krogstad (2011).

scale by scale, premultiplied energy spectra $\omega\phi_{uu}/U_\tau^2$ are shown in figure 8, where $\omega = 2\pi/T$ is the angular frequency, T is the time period (corresponding to the wavelength in the spatial domain), ϕ_{uu} is the energy spectrum of the streamwise velocity fluctuation ($\int_0^\infty \phi_{uu} d\omega = \overline{u^2}$) and U_τ is the friction velocity measured from the OFI experiments (see §3). The spectrograms presented are computed from hotwire time series data. Further, since the flow is heterogeneous in x , we refrain from converting the spectrum from the temporal to the spatial domain, which has been shown to have limited accuracy in rough-walled flows (Squire *et al.* 2017). The colour

contour maps in figure 8(a,c,e) are computed from the rough-to-smooth cases, while the solid contour lines represent a smooth-wall reference, which is obtained by interpolating the spectrum reported by Marusic *et al.* (2015) to the same Re_τ as the corresponding rough-to-smooth case. The length of the hotwire filament in viscous units is $l^+ \approx 17$ for the present rough-to-smooth case at $\hat{x}/\delta = 13.4$, while $l^+ \approx 24$ in the smooth-wall reference, leading to 5% more attenuation at the inner site of the spectrum in the rough-to-smooth case compared to the reference (Chin *et al.* 2011). The results reveal clear evidence that the rough-wall structures are present beyond the IBL and are over-energised relative to the local U_τ . In addition, there are signs that even within the IBL, the large-scale motions are over-energised, providing further evidence that the IBL has not returned to equilibrium conditions. These results also show better agreement at smaller scales ($T^+ < 90$), particularly in the near-wall region at larger \hat{x} . A similar observation has also been made by Ismail *et al.* (2018b) following a transition from transverse square ribs to a smooth wall in a channel-flow DNS.

To further elucidate this behaviour, figure 8(b,d,f) shows the difference between the rough-to-smooth spectrum and the reference smooth-walled spectrum, defined as

$$\Delta(\omega\phi_{uu}/U_\tau^2) \equiv (\omega\phi_{uu}/U_\tau^2)_{R \rightarrow S} - (\omega\phi_{uu}/U_\tau^2)_S. \quad (5.1)$$

These difference plots confirm that the energy distribution of the smaller scales recovers first, while the larger scales remain over-energised, reflecting the upstream rough-wall condition. Interestingly, these over-energised large scales are not just restricted to the region above the IBL, but retain a footprint deep into the buffer region. These results suggest that the near-wall region recovering over the smooth surface will be subjected to a heightened degree of superposition and modulation from the over-energised large-scale events which retain the rough-wall upstream history (Mathis, Hutchins & Marusic 2009).

5.1. An alternative method to estimate U_τ

The energy spectrum has revealed that the smaller energetic scales in the near-wall region appear to rapidly recover to equilibrium with the new smooth-walled surface. Based on this observation, we propose an alternative method to estimate U_τ for the flow downstream of a rough-to-smooth transition when no direct measurement at the wall or within the viscous sublayer is available. The essence of this method is to minimise the difference of the energy spectrum of the small scales in the near-wall region between the rough-to-smooth case and a smooth-wall reference dataset by adjusting the velocity scale U_τ for the rough-to-smooth case. There is some precedent for this approach in the literature for smooth-wall canonical wall-bounded turbulent flows. Hutchins *et al.* (2009) have shown that over a range of Reynolds numbers, the energy in small scales appears to collapse to a universal distribution when scaled by the local U_τ . Ganapathisubramani (2018) has shown that this universality is also persistent under the influence of free-stream turbulence, and Monty *et al.* (2009) have observed small-scale universality between pipe, channel and boundary layer geometries. All of these cases suggest small-scale universality in the near-wall region, even in situations where we expect there to be large differences in the footprinting of the large scales onto the near-wall region.

For the present case, a rectangular region S (marked in blue in figure 9a) of energetic scales in the near-wall region is chosen that is bounded by the limits $10 < z^+ < 30$ and $5 < T^+ < 90$. These bounds are chosen empirically based on the

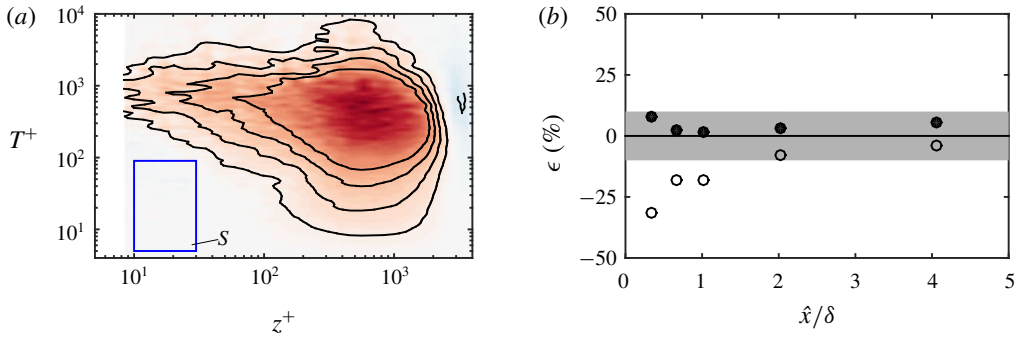


FIGURE 9. (Colour online) (a) Difference in premultiplied spectrum $\omega\phi_{uu}/U_\tau^2$ between the rough-to-smooth case at $\hat{x}/\delta = 2$ with estimated U_τ (U_τ is adjusted such that the integral of the difference across the blue rectangular region S is minimum) and the smooth-wall reference. Contour levels are the same as in figure 8(d). (b) Error $\epsilon = (C_f|_M - C_f|_{OFI})/C_f|_{OFI}$, where M stands for the buffer region fit (open symbols) or the spectrum fit (filled symbols). Here ϵ is the error relative to the OFI results. The shaded band covers -10% to 10% on the vertical axis. Note that the data points at $\hat{x}/\delta = 0.11$ are not shown in the figure as they fall beyond the current axis limit.

vanishing $\Delta(\omega\phi_{uu}/U_\tau^2)$ observed in this region from figure 8. The difference between the viscous scaled energy spectra for the rough-to-smooth case and the smooth case, $\Delta(\omega\phi_{uu}/U_\tau^2)$, is then minimised across this region by varying U_τ for the rough-to-smooth case. Figure 9(a) shows an example where U_τ has been optimised in this manner, to give the minimum $\Delta(\omega\phi_{uu}/U_\tau^2)$ within the rectangular region S . To test the efficacy of this method of determining U_τ , figure 9(b) presents the relative error ϵ in C_f obtained using the spectrum fit (filled symbols) and buffer region fit (open symbols) as compared to the OFI results. The results show that the spectrum fit, although still subject to error, provides a better estimate of U_τ immediately downstream of the rough-to-smooth transition compared to methods that purely rely on the mean streamwise velocity in the buffer region. We note that the precise nature of dependence of the bounds of S on Re_τ , k_s^+ and other flow parameters remains to be examined by performing more experiments covering a broader range of conditions in future works.

6. Summary and conclusions

This work presents a systematic study of estimating the wall-shear stress, τ_w , after a sudden change in surface conditions from a rough to a smooth wall. To this end, a unique collection of experimental and numerical databases are examined offering access to both ‘direct’ and ‘indirect’ measures of τ_w . Our experimental results reveal that the mean flow within the buffer region (defined as $10 < z^+ < 30$) only recovers to an equilibrium state with the new local smooth-wall conditions after approximately five boundary layer thicknesses downstream of the rough-to-smooth transition. Based on these findings, ‘indirect’ techniques that only have access to velocity information above the viscous sublayer are shown to consistently underestimate the magnitude of τ_w immediately downstream of a rough-to-smooth transition. This discrepancy, in turn, can give the erroneous impression of a longer recovery length of C_f to the new wall conditions and is likely to be responsible for the wide range of recovery

trends reported for C_f following a rough-to-smooth transition. More specifically, the further from the wall that C_f is inferred from the velocity profile, the greater the underestimation of C_f , and the greater the recovery length.

To complement the experimental databases and further confirm our findings, a DNS database with comparable flow conditions and access to a direct measure of τ_w is employed. These data lead to similar conclusions, indicating that in the range $0 < \hat{x}/h < 5$, an accurate estimate of the wall-shear stress τ_w can only be obtained in the viscous region ($z^+ \lesssim 4$). More specifically, diagnostic tools that operate in the buffer region are likely to provide a reliable estimate of the wall-shear stress only beyond $\hat{x}/h \gtrsim 5$ downstream of a rough-to-smooth transition.

Through an analysis of the energy spectra we observe that the smaller energetic scales ($T^+ < 90$) in the buffer region adjust to the new wall condition over a relatively short recovery ($\hat{x}/\delta \lesssim 1$). Conversely, the large-scale motions ($T^+ > 90$), which are over-energised (relative to the new smooth-wall boundary condition), retain a strong footprint in the IBL, extending deep into the buffer region. Based on the observation that the small scales attain a universal form over relatively short recovery distances, an alternative approach to estimate the wall-shear stress from the premultiplied energy spectra is proposed when no direct measurement of the wall-shear stress is available. The results reveal improved performance relative to more conventional techniques that are based purely on the mean velocity profile in the buffer region.

Acknowledgements

This research was partially supported under the Australian Research Council's Discovery Projects funding scheme (project DP160103619). This research was also supported by resources provided by the Pawsey Supercomputing Centre with funding from the Australian Government and the Government of Western Australia and by the National Computing Infrastructure (NCI), which is supported by the Australian Government.

Appendix. Skin-friction coefficient data in the literature with a direct measure of τ_w

In this paper, we have highlighted that the scatter for the recovery of C_f after a rough-to-smooth transition appears to be partly due to the measurement techniques employed. However, the recovery of C_f can be affected by a number of factors (see § 1) including the Reynolds number, flow geometry (boundary layer or channel and pipe) and the roughness geometry. In order to examine some of these additional factors, figure 10 presents a subset of the datasets previously shown in figure 1(b) and table 1 that have access to a direct measure of the wall-shear stress. Consequently, we are limited to comparing data from the present study and the data of Chamorro & Porté-Agel (2009) and Ismail *et al.* (2018a,b). Although limited by available data, figure 10 suggests the overshoot in the current DNS database and the lowest Re database from Ismail *et al.* (2018b) (\diamond) might be a low-Reynolds-number effect. Certainly, the higher Re data from Ismail *et al.* (2018b) (\blacklozenge , \blacktriangleleft and \blackstar) do not exhibit this overshoot. Further data are required to confirm this tentative observation. In addition, the boundary layer data shown in figure 10 (OFI in the present study and near-wall hotwire in Chamorro & Porté-Agel (2009)) reveal a substantial difference in the recovery length. However, from table 1 it is noted that the rough-to-smooth case of Chamorro & Porté-Agel (2009) had a much higher Re_τ and k_s^+ than the current experimental study, which may suggest further influencing factors. Furthermore,

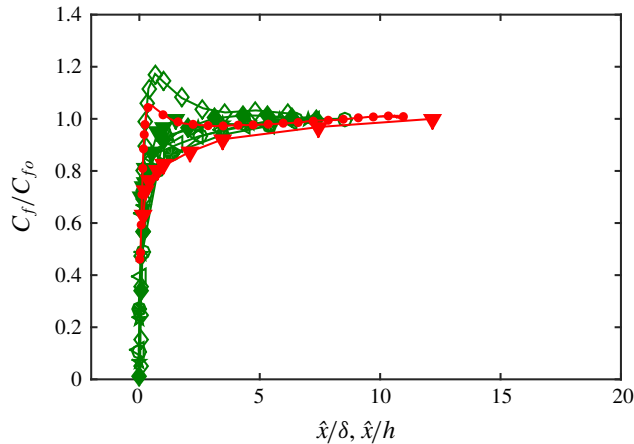


FIGURE 10. (Colour online) Revisit of the C_f data from the literature as shown in figure 1(b). Only the datasets with a direct measurement of the wall-shear stress are shown, and symbols are the same as in table 1. OFI and DNS results from the current study are represented by ▼ (red) and ● (red), respectively.

datasets with a direct measure of τ_w are dominated by DNS studies, and they are mostly conducted with a channel configuration at low Reynolds numbers with high k_s/h values. These tendencies may also bias the comparison. To answer these questions, future works over a wide range of Re , roughness parameters and flow geometries with a direct measure of wall-shear stress are necessary.

REFERENCES

- DEL ALAMO, J. C., JIMÉNEZ, J., ZANDONADE, P. & MOSER, R. D. 2004 Scaling of the energy spectra of turbulent channels. *J. Fluid Mech.* **500**, 135–144.
- ANTONIA, R. A. & LUXTON, R. E. 1972 The response of a turbulent boundary layer to a step change in surface roughness. Part 2. Rough-to-smooth. *J. Fluid Mech.* **53**, 737–757.
- BOU-ZEID, E., MENEVEAU, C. & PARLANGE, M. B. 2004 Large-eddy simulation of neutral atmospheric boundary layer flow over heterogeneous surfaces: blending height and effective surface roughness. *Water Resour. Res.* **40**, W02505.
- BRADLEY, E. F. 1968 A micrometeorological study of velocity profiles and surface drag in the region modified by a change in surface roughness. *Q. J. R. Meteorol. Soc.* **94**, 361–379.
- CHAMORRO, L. P. & PORTÉ-AGEL, F. 2009 Velocity and surface shear stress distributions behind a rough-to-smooth surface transition: a simple new model. *Boundary-Layer Meteorol.* **130**, 29–41.
- CHAN, L., MACDONALD, M., CHUNG, D., HUTCHINS, N. & OOI, A. 2015 A systematic investigation of roughness height and wavelength in turbulent pipe flow in the transitionally rough regime. *J. Fluid Mech.* **771**, 743–777.
- CHAUHAN, K. A., MONKEWITZ, P. A. & NAGIB, H. M. 2009 Criteria for assessing experiments in zero pressure gradient boundary layers. *Fluid Dyn. Res.* **41**, 021404.
- CHIN, C., HUTCHINS, N., OOI, A. & MARUSIC, I. 2011 Spatial resolution correction for hot-wire anemometry in wall turbulence. *Exp. Fluids* **50**, 1443–1453.
- CHUNG, D., CHAN, L., MACDONALD, M., HUTCHINS, N. & OOI, A. 2015 A fast direct numerical simulation method for characterising hydraulic roughness. *J. Fluid Mech.* **773**, 418–431.
- CHUNG, D., MONTY, J. P. & OOI, A. 2014 An idealised assessment of Townsend’s outer-layer similarity hypothesis for wall turbulence. *J. Fluid Mech.* **742**, R3.

- CLAUSER, F. H. 1954 Turbulent boundary layers in adverse pressure gradients. *J. Aero. Sci.* **21**, 91–108.
- COWEN, E. A. & MONISMITH, S. G. 1997 A hybrid digital particle tracking velocimetry technique. *Exp. Fluids* **22**, 199–211.
- EFROS, V. & KROGSTAD, P. A. 2011 Development of a turbulent boundary layer after a step from smooth to rough surface. *Exp. Fluids* **51**, 1563–1575.
- ELLIOTT, W. P. 1958 The growth of the atmospheric internal boundary layer. *Trans. Am. Geophys. Union* **39**, 1048–1054.
- FERNHOLZ, H. H., JANKE, G., SCHOBER, M., WAGNER, P. M. & WARNACK, D. 1996 New developments and applications of skin-friction measuring techniques. *Meas. Sci. Technol.* **7**, 1396–1409.
- GANAPATHISUBRAMANI, B. 2018 Law of the wall for small-scale streamwise turbulence intensity in high-Reynolds-number turbulent boundary layers. *Phys. Rev. Fluids* **3**, 104607.
- GARRATT, J. R. 1990 The internal boundary layer – a review. *Boundary-Layer Meteorol.* **50**, 171–203.
- HANSON, R. E. & GANAPATHISUBRAMANI, B. 2016 Development of turbulent boundary layers past a step change in wall roughness. *J. Fluid Mech.* **795**, 494–523.
- HARUN, Z., MONTY, J. P., MATHIS, R. & MARUSIC, I. 2013 Pressure gradient effects on the large-scale structure of turbulent boundary layers. *J. Fluid Mech.* **715**, 477–498.
- HUTCHINS, N., NICKELS, T. B., MARUSIC, I. & CHONG, M. S. 2009 Hot-wire spatial resolution issues in wall-bounded turbulence. *J. Fluid Mech.* **635**, 103–136.
- ISMAIL, U., ZAKI, T. A. & DURBIN, P. A. 2018a The effect of cube-roughened walls on the response of rough-to-smooth (RTS) turbulent channel flows. *Intl J. Heat Fluid Flow* **72**, 174–185.
- ISMAIL, U., ZAKI, T. A. & DURBIN, P. A. 2018b Simulations of rib-roughened rough-to-smooth turbulent channel flows. *J. Fluid Mech.* **843**, 419–449.
- KEVIN, NUGROHO, B., MONTY, J. P., HUTCHINS, N., PATHIKONDA, G., BARROS, J. M. & CHRISTENSEN, K. T. 2015 Dissecting a modified turbulent boundary layer using particle image velocimetry. In *7th Australian Conference on Laser Diagnostics in Fluid Mechanics and Combustion, Melbourne, Australia*. Monash University.
- MARUSIC, I., CHAUHAN, K. A., KULANDAIVELU, V. & HUTCHINS, N. 2015 Evolution of zero-pressure-gradient boundary layers from different tripping conditions. *J. Fluid Mech.* **783**, 379–411.
- MARUSIC, I., MONTY, J. P., HULTMARK, M. & SMITS, A. J. 2013 On the logarithmic region in wall turbulence. *J. Fluid Mech.* **716**, R3.
- MARUSIC, I. & PERRY, A. E. 1995 A wall-wake model for the turbulence structure of boundary layers. Part 2. Further experimental support. *J. Fluid Mech.* **298**, 389–407.
- MATHIS, R., HUTCHINS, N. & MARUSIC, I. 2009 Large-scale amplitude modulation of the small-scale structures in turbulent boundary layers. *J. Fluid Mech.* **628**, 311–337.
- MOGENG, M. L., DE SILVA, C. M., BAIDYA, R., ROUHI, A., CHUNG, D., MARUSIC, I. & HUTCHINS, N. 2018 Recovery of a turbulent boundary layer following a rough-to-smooth step-change in the wall condition. In *Proc. 21st Australasian Fluid Mechanics Conference*. Australasian Fluid Mechanics Society.
- MONTY, J. P., HUTCHINS, N., NG, H. C. H., MARUSIC, I. & CHONG, M. S. 2009 A comparison of turbulent pipe, channel and boundary layer flows. *J. Fluid Mech.* **632**, 431–442.
- MUSKER, A. J. 1979 Explicit expression for the smooth wall velocity distribution in a turbulent boundary layer. *AIAA J.* **17**, 655–657.
- NG, H. C. H., MARUSIC, I., MONTY, J. P., HUTCHINS, N. & CHONG, M. S. 2007 Oil film interferometry in high Reynolds number turbulent boundary layers. In *Proc. 16th Australasian Fluid Mechanics Conference, Gold Coast, Australia*. Australasian Fluid Mechanics Society.
- NUGROHO, B. 2015 Highly ordered surface roughness effects on turbulent boundary layers. PhD thesis, University of Melbourne.
- NUGROHO, B., HUTCHINS, N. & MONTY, J. P. 2013 Large-scale spanwise periodicity in a turbulent boundary layer induced by highly ordered and directional surface roughness. *Intl J. Heat Fluid Flow* **41**, 90–102.

- PATEL, V. C. 1965 Calibration of the Preston tube and limitations on its use in pressure gradients. *J. Fluid Mech.* **23**, 185–208.
- RAO, K. S., WYNGAARD, J. C. & COTÉ, O. R. 1974 The structure of the two-dimensional internal boundary layer over a sudden change of surface roughness. *J. Atmos. Sci.* **31**, 738–746.
- ROUHI, A., CHUNG, D. & HUTCHINS, N. 2019 Direct numerical simulation of open channel flow over smooth-to-rough and rough-to-smooth step changes. *J. Fluid Mech.* **866**, 450–486.
- SAITO, N. & PULLIN, D. I. 2014 Large eddy simulation of smooth–rough–smooth transitions in turbulent channel flows. *Intl J. Heat Mass Transfer* **78**, 707–720.
- SAVELYEV, S. A. & TAYLOR, P. A. 2005 Internal boundary layers: I. Height formulae for neutral and diabatic flows. *Boundary-Layer Meteorol.* **115**, 1–25.
- SCOTTI, A. 2006 Direct numerical simulation of turbulent channel flows with boundary roughened with virtual sandpaper. *Phys. Fluids* **18**, 031701.
- SHIR, C. C. 1972 A numerical computation of air flow over a sudden change of surface roughness. *J. Atmos. Sci.* **29**, 304–310.
- SILLERO, J. A., JIMÉNEZ, J. & MOSER, R. D. 2013 One-point statistics for turbulent wall-bounded flows at Reynolds numbers up to $\delta^+ = 2000$. *Phys. Fluids* **25**, 105102.
- DE SILVA, C. M., GNANAMANICKAM, E. P., ATKINSON, C., BUCHMANN, N. A., HUTCHINS, N., SORIA, J. & MARUSIC, I. 2014 High spatial range velocity measurements in a high Reynolds number turbulent boundary layer. *Phys. Fluids* **26**, 025117.
- SILVA LOPES, A., PALMA, J. M. L. M. & PIOMELLI, U. 2015 On the determination of effective aerodynamic roughness of surfaces with vegetation patches. *Boundary-Layer Meteorol.* **156**, 113–130.
- SMITS, A. J., MCKEON, B. J. & MARUSIC, I. 2011 High-Reynolds number wall turbulence. *Annu. Rev. Fluid Mech.* **43**, 353–375.
- SQUIRE, D. T., HUTCHINS, N., MORRILL-WINTER, C., SCHULTZ, M. P., KLEWICKI, J. C. & MARUSIC, I. 2017 Applicability of Taylor’s hypothesis in rough- and smooth-wall boundary layers. *J. Fluid Mech.* **812**, 398–417.
- TALLURU, K. M., KULANDAIVELU, V., HUTCHINS, N. & MARUSIC, I. 2014 A calibration technique to correct sensor drift issues in hot-wire anemometry. *Meas. Sci. Technol.* **25**, 105304.
- WU, Y., REN, H. & TANG, H. 2013 Turbulent flow over a rough backward-facing step. *Intl J. Heat Fluid Flow* **44**, 155–169.
- YAVUZKURT, S. 1984 A guide to uncertainty analysis of hot-wire data. *Trans. ASME* **106**, 181–186.
- ZANOUN, E. S., DURST, F. & NAGIB, H. 2003 Evaluating the law of the wall in two-dimensional fully developed turbulent channel flows. *Phys. Fluids* **15**, 3079–3089.